



GOOD MORNING

Have Good Trading Day

TUESDAY



Price is what you pay.  
Value is what you get.

- Warren Buffet



## MARKET PULSE

### INDIAN INDICES

NAME	CMP	NET CH.	%
SENSEX	25230	-71	-0.28
NIFTY	7731	-18	-0.24

### INDIAN ADR'S

SYMBOL	CLOSE	GAIN/ LOSS %
DRREDDY	44.77	-0.02
HDFCBANK	63.21	+0.08
ICICIBK	6.69	+0.60
INFY	18.39	-0.38
TATAMOTOR	28.05	-2.40
WIPRO	11.95	-0.42

### FII AND MF ACTIVITY

SYMBOL	In Crs.
FIIs Eq (Provisional)	-65.60
FIIs Index Future	325.92
FIIs Index Options	1213.30
FIIs Stock Future	385.79
FIIs Stock Options	-229.93
DII's Eq (Provisional)	-167.77

### CURRENCY

RBI RATE	23-MAY-2016
RUPEE - \$	67.3492
EURO	75.6197
YEN 100	61.3800
GBP	97.7641

## MARKET PULSE

### GLOBAL INDICES

NAME	CMP	NET CH.	%
DOW	17492	-8	-0.05
NASDAQ	4765	-3	-0.08
NIKKEI	16543	-111	-0.67
HANG SENG	19788	-21	-0.11
SGX NIFTY	7730	-7	-0.09

### WORLD COMMODITIES

FUTURE	U\$\$	CHANGES
CRUDE	47.98	-0.10
NATURAL GAS	2.195	-0.004
GOLD	1247.6	-3.90
SILVER	16.365	-0.058
COPPER	2.0560	+0.0010

### WORLD EVENTS

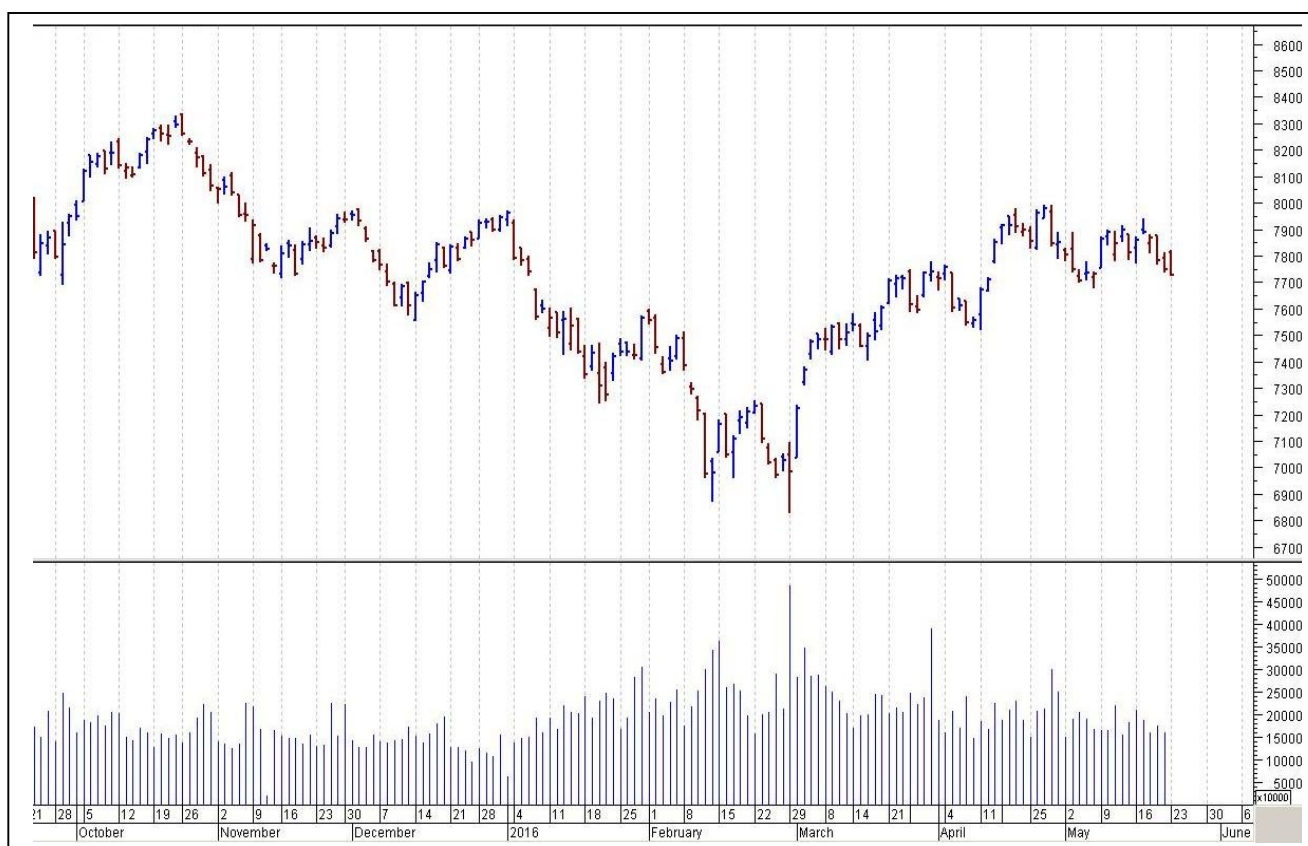
- US: New Home Sales
- UK: Inflation Report Hearings

## TOP STORY

- SAIL -Company asked to pay Rs 323 crore in damages to Essar Shipping
- Tata Steel, KKR likely to bid for Essar Steel: FE
- Flexituff International entered into an agreement with KKR India for debt fund raising up to 150 cr
- NALCO signs MoU with Iran company to explore setting up an aluminium smelter to supply alumina from India.
- Piramal Fund Management invests Rs 425 crore in Lodha Project
- Calcutta High Court approves merger of subsidiaries with Titagarh Wagons
- Oilmax Energy launches open offer to acquire 26 percent in Asian Oilfield at Rs 32.4/share
- Tata Power Q4 -Net Profit At Rs 360.3 Crore Versus Rs 159.1 Crore (YoY) -Total Income Up 18.6 percent At Rs 9,375.2 Crore Versus Rs 7,908 Crore (YoY)
- Torrent Pharma Q4 Profit At Rs357 Cr Vs Rs130 Cr (YoY). Income Up At Rs 1,499 Cr Vs Rs 1,154 Cr (YoY)



## NIFTY CHART



## MARKET COMMENTARY

Indian equity benchmarks commenced the week on a sluggish note as the indices showcased an unenthusiastic performance on Monday and settled with moderate cuts of around a quarter percent. Sentiments remained down-beat with RBI Governor Raghuram Rajan's statement that India should restrain itself from being 'too ambitious' at a time when the world is full of uncertainties and instead focus on sensible policies to ensure a sustainable economic growth. Rajan has also said that Indian economy has certainly picked up pace in growth, but certain sectors are still under stress, making the economic recovery uneven. Besides, prospects of early interest rate hike by the US Federal Reserve in June and slip in crude oil prices also hurt sentiments. However, the downside risks for the frontline indices was limited by reports that India's net FDI flows are expected to rise further this fiscal to \$38 billion on emergence of some 'positive signs' such as regulatory easing in select sectors and reform measures initiated by the government. Net FDI flows in 2015-2016 stood at around \$36 billion as against \$31 billion for 2014-2015. For today's trade Nifty likely to trade in the range between 7745 – 7765 in the upper side and 7715 – 7685 in the lower side

### MARKET LEVELS

	CMP	SUPPORT LEVELS				RESISTANCE LEVELS			
NIFTY	7731	7715	7685	7665	7625	7745	7765	7795	7815
USDINR	67.55	67.45	67.35	67.3	67.2	67.65	65.7	67.75	67.85





#### BULK DEALS (BSE)

SCRIP	CLIENT NAME	BUY/SELL	QUANTITY	PRICE
VAL	ARYAMAN BROKING LIMITED	B	36,000	26.25
VAL	ROOPSHRI FINVEST PVT LTD	S	36,000	26.25

#### BULK DEALS (NSE)

SCRIP	CLIENT NAME	BUY/SELL	QUANTITY	PRICE
ATFL	PARI WASHINGTON COMPANY A/C PARI WASHINGTON INDIA MASTER FU	BUY	207549	495
ATFL	CATAMARAN CAPITAL	SELL	292686	495
BIRLACORPN	MOTILAL OSWAL	BUY	395000	370.6
BIRLACORPN	RAAMDEO AGRAWAL	BUY	395000	370.6
PHOENIXLL	KOTAK MAHINDRA (INTERNATIONAL ) LTD A/C PREMIER INVESTMENT	SELL	157991	117.41

#### SCRIP'S IN F&O BAN

(To resume for normal trading below 80% of market wide limit required)

HDIL, IBREALEST,INDIACEM, JINDALSTEL

#### Initial Public Offering (IPO)

Company Name	Security type	Issue Start Date	Issue End Date	Status
NIL				



NIFTY 50 STOCKS: SUPPORT & RESISTANCE						
Symbol	Close	Support 1	Support 2	Pivot Point	Resistance1	Resistance2
ACC	1418	1396	1374	1412	1434	1450
ADANI PORTS	181	179	176	181	183	185
AMBUJACEM	213	210	207	212	214	216
ASIANPAINT	947	940	934	950	957	966
AXISBANK	487	483	479	489	493	499
BAJAJ-AUTO	2422	2399	2376	2431	2454	2487
BANKBARODA	132	130	128	133	135	138
BHARTIARTL	346	342	338	345	349	353
BHEL	119	118	117	119	120	121
BOSCHLTD	21057	20818	20578	21106	21345	21634
BPCL	922	911	901	922	932	943
CAIRN	138	137	135	138	139	141
CIPLA	497	491	486	501	507	516
COALINDIA	281	279	277	280	282	283
DRREDDY	3030	3017	3004	3032	3045	3060
GAIL	371	366	361	373	378	385
GRASIM	4211	4182	4153	4220	4250	4288
HCLTECH	734	730	727	735	738	743
HDFC	1160	1150	1140	1169	1179	1197
HDFCBANK	1137	1130	1123	1140	1147	1157
HEROMOTOCO	2888	2869	2851	2887	2905	2923
HINDALCO	87	86	85	87	88	89
HINDUNILVR	820	813	807	819	826	832
ICICIBANK	221	220	218	222	223	225
IDEA	110	109	108	110	111	112
INDUSINDBK	1056	1044	1033	1062	1074	1092
INFY	1188	1180	1173	1193	1200	1213
ITC	347	339	332	347	354	362
KOTAKBANK	703	699	695	705	709	715
LT	1241	1231	1221	1248	1259	1276
LUPIN	1465	1435	1405	1481	1511	1556
M&M	1285	1276	1268	1289	1297	1310
MARUTI	3914	3886	3859	3927	3955	3996
NTPC	136	135	134	136	137	139
ONGC	208	206	203	210	213	217
PNB	72	72	71	73	73	75
POWERGRID	148	146	143	147	150	151
RELIANCE	930	924	917	932	939	947
SBIN	168	167	165	170	171	174
SUNPHARMA	785	778	771	786	792	800
TATAMOTORS	382	378	374	384	388	394
TATAPOWER	71	70	70	71	71	72
TATASTEEL	314	309	304	317	322	331
TCS	2491	2466	2440	2506	2532	2572
TECHM	476	473	469	477	481	485
ULTRACEMCO	3122	3103	3083	3130	3149	3176
VEDL	98	96	95	98	99	100
WIPRO	540	537	535	541	543	547
YESBANK	978	973	969	979	984	990
ZEEL	436	432	428	438	442	448



## CORPORATE ACTION / BOARD MEETINGS

NSE Download Ref No:NSE/FAOP/32249:- Exclusion of Futures and Options contracts on IOB and UCOBANK w.e.f. July 01, 2016

NSE Download Ref No. : NSE/SURV/32363:-Future Retail Limited (Symbol - FRL and Symbol - FRLDVR) shall be transferred from trade fortrade segment (series: BE) to rolling segment (series: EQ) with effect from May 25, 2016

NSE Download Ref No. : NSE/SURV/32373:-Jindal Photo Limited (JINDALPHOT) shall be transferred from trade for trade segment (series:BE) to rolling segment (series: EQ) with effect from May 26, 2016

NSE Download Ref No. : NSE/SURV/32380:- Crompton Greaves Consumer Electricals Limited (CROMPTON) shall be transferred from trade for trade segment (series: BE) to rolling segment (series: EQ) with effect from May 27, 2016 (Friday)

NSE Download Ref No : NSE/FAOP/32406:- Exclusion of Futures and Options contracts on Unitech Limited (UNITECH) w.e.f. July 29, 2016

### BOARD MEETINGS

COMPANY NAME	DATE	PURPOSE	RS. PER SH.
RAYMOND	26-May-16	Dividend	3
TRIDENT	26-May-16	Annual General Meeting/ Dividend	0.3
YESBANK	30-May-16	Annual General Meeting/ Dividend	10
PAGEIND	31-May-16	Dividend	
NBCC	2-Jun-16	Face Value Split From Rs 10 To Rs 2	
KITEX	2-Jun-16	Annual General Meeting/ Dividend	0.75
LAKSHVILAS	2-Jun-16	Annual General Meeting/ Dividend	3
SBIN	3-Jun-16	Dividend	
SIL	9-Jun-16	Annual General Meeting/ Dividend	0.75
INFY	9-Jun-16	Annual General Meeting/ Dividend	14.25
ESSELPACK	9-Jun-16	Dividend	2.2
GRUH	10-Jun-16	Annual General Meeting/ Dividend	2.3
KANSAINER	14-Jun-16	Annual General Meeting/ Dividend	3.05
ICICIBANK	16-Jun-16	Annual General Meeting/ Dividend	5
ASIANPAINT	16-Jun-16	Annual General Meeting/ Dividend	5.3
EVERESTIND	21-Jun-16	Annual General Meeting/ Dividend	5
HINDUNILVR	22-Jun-16	Annual General Meeting/ Dividend	9.5
INDUSINDBK	23-Jun-16	Annual General Meeting/ Dividend	4.5
INDIANB	23-Jun-16	Annual General Meeting/ Dividend	1.5
WELSPUNIND	23-Jun-16	Annual General Meeting/ Dividend	0.05

## NEWS & RUMOURS:

- Gold (Spot Dollar) major support = \$1212/\$1182 & Resistance = \$1278/\$1303.
- Crude oil range->\$42 to \$52.
- Commodities Drop, U.S. Stocks Fluctuate Amid Interest-Rate Focus: - Commodities slid, led by metals, while U.S. stocks fluctuated as investors awaited more clarity on the timing of the Federal Reserve's next increase in interest rates and the outlook for inflation. The yen strengthened.
- Dollar holds onto modest gains vs. other majors: - The dollar held onto modest gains against the other major currencies trade in quiet trade on Monday, as expectations for June rate hike by the Federal Reserve continued to support demand for the greenback.
- U.S. natural gas futures jump on warm weather forecasts: - U.S. natural gas futures rose on Monday, after the latest U.S. weather model called for warmer temperatures over the next two weeks, which should increase cooling demand during that time. Natural gas prices have closely tracked weather forecasts in recent weeks, as traders try to gauge the impact of shifting outlooks on spring heating demand.
- Gold prices fall towards 4-week low as summer rate hike bets grow: - Gold futures fell towards a four-week low in North American trade on Monday, [adding to overnight losses](#), as investors bet that the Federal Reserve was on track to raise interest rates sooner rather than later.
- Oil falls as Iran firm on export rise, U.S. rigs decline slower: - Brent crude prices fell two percent on Monday as investor focus returned to global supply, with Iran insisting on a rise in oil exports and U.S. drillers slowing the reduction in rigs. Iran's Deputy Oil Minister Rokneddin Javadi told the Mehr news agency on Sunday his country had no plan to halt a rise in oil production and exports.

## TRENDS & OUTLOOK – DATE: 24- May- 2016

### PRECIOUS METALS:

COMMDITY (MCX)	S2	S1	PIVOT POINT	R1	R2
GOLD (June)	29130	29410	29655	29937	30150
SILVER (July)	37700	38500	39550	40786	42100

### BASE METALS

COMMDITY (MCX)	S2	S1	PIVOT POINT	R1	R2
COPPER (June)	300	304	309	314	320
ZINC (May)	119.50	122.10	124.20	127.60	130.30
LEAD (May)	107.10	109.60	112.20	114.75	117.30
NICKEL (May)	532	545	567	588	603

### ENERGY

COMMDITY (MCX)	S2	S1	PIVOT POINT	R1	R2
CRUDE OIL (June)	3040	3130	3245	3333	3420
NATURAL GAS (May)	131	136	142	146	151

### DATE TALKS : TODAY'S ECONOMIC DATA :

RBA Gov Stevens Speaks, Public Sector Net Borrowing of GBP, German ZEW Economic Sentiment, ZEW Economic Sentiment, Inflation Report Hearings of GBP.





Registered Office

Indira House, 3rd Floor, 5 Topiwala Lane,  
Opp. Lemington Road Police Station, Grant Road (East), Mumbai - 400007.

Corporate Office

'Ramavat House' E-15, Saket Nagar, Indore - 452018 (M.P.)

Customer Care

Tel: +91-731-4097170/ 71/ 72/ 73/ 74 M. +91 93031 72345

Email: [customercare@indiratrade.com](mailto:customercare@indiratrade.com) [www.indiratrade.com](http://www.indiratrade.com)



INSTITUTIONAL DEALING UNIT

Africa House, 5, Topiwalla Lane, Lamington Road, Mumbai, 400007

Tel: +91 22 30080678 Fax : +91 22 23870767 Email : [ie@indiratrade.com](mailto:ie@indiratrade.com)

**Disclaimer**

This report is for private circulation within the Indira Group. This report is strictly confidential and for information of the selected recipient only and may not be altered in any way, transmitted to, copied or distributed, in part or in whole, to any other person or to the media or reproduced in any form. This report should not be construed as an offer or solicitation to buy or sell any securities or any interest in securities. It does not constitute a personal recommendation or take into account the particular investment objectives, financial situations, or any such factor. The information, opinions estimates and forecasts contained here have been obtained from, or are based upon, sources we believe to be reliable, but no representation of warranty, express or implied, is made by us to their accuracy or completeness. Opinions expressed are our current opinions as of the date appearing on this material only and are subject to change without notice.